

Gas Interface Management Unit (IMU) Configurator

Laptop software that offers configuration and read verification for Gas IMUs

- » Pairs with Silver Spring Field Service Unit for Gas IMU configuration, installation and testing inside the meter shop
- » Assists meter vendors integrating Gas IMUs onto their meters
- » Supports multiple device configurations for easy lab-to-production conversion
- » Color codes successful and unsuccessful results in the user interface
- » Supports multiple barcode scanners for data input

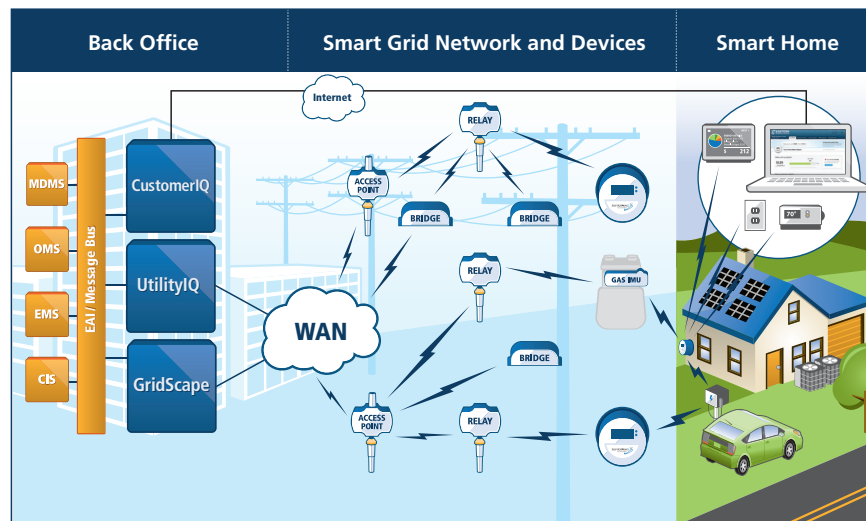
Configure and test Gas IMUs with a single multi-functional application

The Silver Spring™ Smart Energy Platform combines network infrastructure, software, and professional services to enable a range of smart grid applications. The Silver Spring Gas Interface Management Unit (IMU) adds advanced two-way communications to a wide variety of existing gas meters, and a series of handheld and laptop-based tools aid in configuring and testing these and other Silver Spring devices.

The Silver Spring Gas IMU Configurator is a PC-based application that works in conjunction with a Silver Spring Field Service Unit (FSU) to configure Gas IMUs for field or lab use. Gas IMU Configurator enables the utility meter shop or gas meter manufacturer to rapidly configure and verify Gas IMU settings in just a few easy steps. Once the operator selects the configuration

parameters, it takes just two barcode scans, one button press, and about five seconds to test the Gas IMU's RF functionality, configure the device, wirelessly communicate the confirmation back to the operator, and log the results. In addition, the Gas IMU Configurator supports firmware upgrades and read verification and provides a partial data file suitable for upload into the Silver Spring UtilityIQ® application suite.

The Gas IMU Configurator implements operator- and administrator-level permissions, with an automatic "token" countdown for additional security. This security feature tracks the number of operations a user performs and prevents the operator from performing additional operations once the allotted tokens are exhausted. An administrative user may easily modify device



An advanced, IP-based network enables the smart grid—from the data center to the customer premise.

About Silver Spring Networks

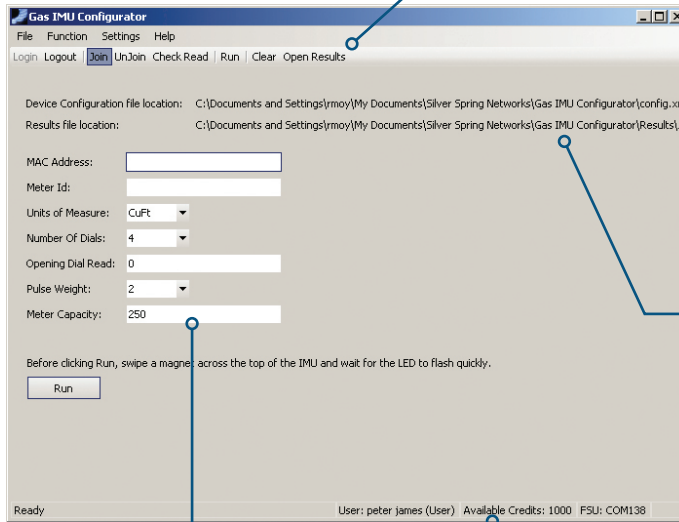
Silver Spring Networks is a leading smart grid networking platform technology and solutions provider. We have connected over 10 million homes and businesses throughout the world with the goal of achieving greater energy efficiency for the planet. Our innovative products enable utilities to gain efficiencies, integrate renewable energy sources and empower customers to monitor and manage energy consumption. Silver Spring Networks' clients include Baltimore Gas & Electric, CitiPower & Powercor, Florida Power & Light, Jemena Electricity Networks Limited, Pacific Gas & Electric and Pepco Holdings, Inc. among others. For more information please visit www.silverspringnet.com.

Gas Interface Management Unit (IMU) Configurator

System requirements:

- » Windows XP Service Pack 3
- » Microsoft .NET framework 3.5 Service Pack 1 or higher
- » USB port
- » Compatibility with USB hardware device drivers and with Microsoft ICCD smart card driver
- » CD-ROM drive (for application installation)

configurations, create new configurations, edit user access, and allocate additional operator tokens. Administrators may also restrict operator-level users to specific operations. For example, an administrator may grant an operator permission to perform check reads but not firmware upgrades.



The "Function Shortcut" bar allows user to toggle between the application use cases, clear the user-input data fields, and view results.

The "File Locations" pane shows the input configuration and results output file paths.

The "Data Input" pane allows keyboard or barcode scanner input for Gas IMU and meter-specific data.

The "Status" bar displays the user login name, the number of software tokens remaining, and the FSU comm port status.